



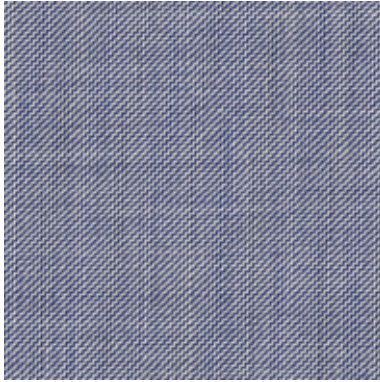
SS23 COLLECTION



Jacket

Model – Soho

LONDONER
754541



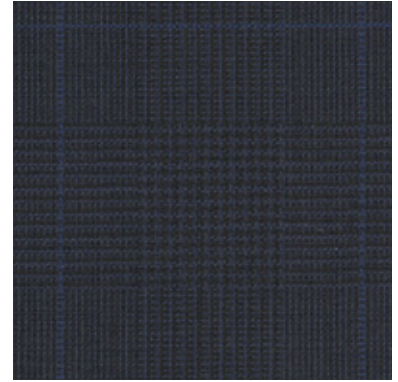
Trouser

Model – G725

Jacket

Model – Soho

COSMOPOLITAN
705974



Trouser

Model – V700

LONDONER

This classic suiting collection has been refreshed for a new season. This is a comprehensive collection with a large selection of colours, designs and patterns all woven in a fine Super 140's wool with an exquisite handle and drape.

This collection is as British as its name suggests, made in England at the Scabal mill with a design signature that takes its inspiration from the archives of the finest England suiting.

As you would expect ground colours are traditional but the Scabal twist and attention to detail creates stripes, checks and micro designs that bring an unexpected range of colours into the mix only discovered when you examine the cloths closely.

COSMOPOLITAN

Cosmopolitan is an ideal collection of summer suiting's designed to survive the urban jungle in the heat of summer without losing your sartorial edge.

Made from superfine Merino wool, this tropical weave fabric range is as varied as its name suggests. The colours and designs have been chosen to add to the feel of lightness in the fabric. Stripes are narrow and elegant, checks are subtle and tonal and overall the colours are considered and interesting ranging from the contemporary hues of beige, racing green, deep burgundy and rusty brown to a wide selection of more traditional suiting tones of greys, blues and blacks.

Summer in the city has never been so stylish.



Jacket

Model – Kenton

DYNAMIC
706011

Trouser

Model – W700



DYNAMIC

One of the foundations of the Scabal performance collections, Dynamic is refreshed for the first time since its original launch. This is a range of fabrics designed specifically for the needs of modern life, it has a gentle stretch which makes it comfortable for home working or long journeys, its crease-resistant properties make it ideal to be folded into a carryon suitcase without fear it will need to be pressed upon arrival. It is also shower resistant, perfect for the unpredictable weather patterns of global travelling.

Colour and designs are fresh and contemporary, crisp checks, tonal patterns and a wide selection of plains ranging from soft pastels through to classic greys, blues and black.

This lightweight, practical fabric is ideal for the requirements of a modern, hard-working suit.



Jacket

Model – Kenton

ST TROPEZ
853314



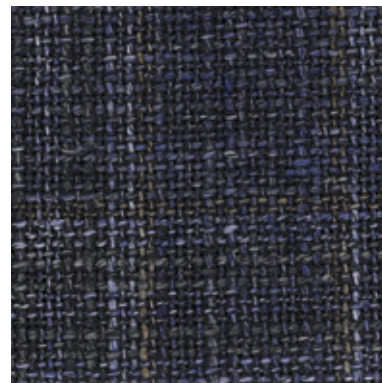
Trouser

Model – Dark
Denim

Jacket

Model – Soho

ST TROPEZ
853318



Trouser

Model – Dark
Denim

ST. TROPEZ

Designed with the laid-back glamour and relaxed summer feel of this iconic destination in mind, the St Tropez collection returns this season.

The collection falls into three chapters. Opening with a selection of fancy checks, moving into a range of soft pique and closing with some modern seersuckers.

Across the selection of checks you will see oranges, purples, greens, reds and shades of blues combined in unexpected combinations to create statement jackets designed to stand out on a summer evening.

A modern summer jackets needs to be more than just beautiful and this collection answers that brief by introducing a selection of fabrics with a pique knitted character and a soft stretch to give greater comfort and a more relaxed look.

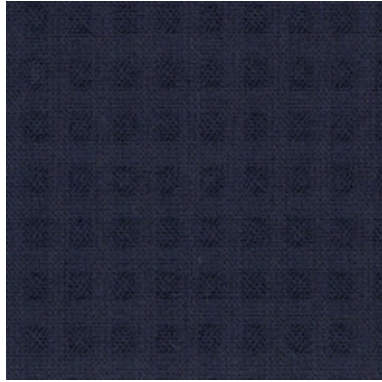
Closing the range is a choice of subtle seersuckers with a modern feel and a soft stretch. Ideal to create a more classic blazer or even a contemporary Tuxedo.



Jacket

Model – Kenton

ST TROPEZ
853325



Casual Trouser

Model – Perth R

DYNAMIC
706044



ST. TROPEZ

Designed with the laid-back glamour and relaxed summer feel of this iconic destination in mind, the St Tropez collection returns this season.

The collection falls into three chapters. Opening with a selection of fancy checks, moving into a range of soft pique and closing with some modern seersuckers.

Across the selection of checks you will see oranges, purples, greens, reds and shades of blues combined in unexpected combinations to create statement jackets designed to stand out on a summer evening.

A modern summer jacket needs to be more than just beautiful and this collection answers that brief by introducing a selection of fabrics with a pique knitted character and a soft stretch to give greater comfort and a more relaxed look.

Closing the range is a choice of subtle seersuckers with a modern feel and a soft stretch. Ideal to create a more classic blazer or even a contemporary Tuxedo.

DYNAMIC

One of the foundations of the Scabal performance collections, Dynamic is refreshed for the first time since its original launch. This is a range of fabrics designed specifically for the needs of modern life, it has a gentle stretch which makes it comfortable for home working or long journeys, its crease-resistant properties make it ideal to be folded into a carryon suitcase without fear it will need to be pressed upon arrival. It is also shower resistant, perfect for the unpredictable weather patterns of global travelling.

Colour and designs are fresh and contemporary, crisp checks, tonal patterns and a wide selection of plains ranging from soft pastels through to classic greys, blues and black.

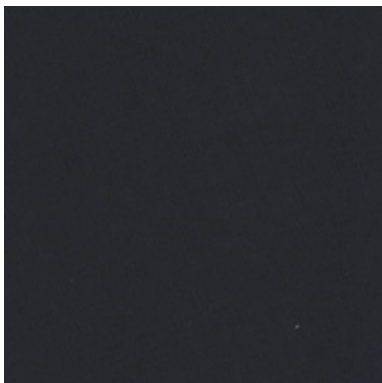
This lightweight, practical fabric is ideal for the requirements of a modern, hard-working suit.



Jacket

Model – Kenton

DYNAMIC
706030



Knitwear

Model – Pendle

HEAVY LINEN
COTTON
137498

Casual Trouser

Model – Perth R

DYNAMIC
706045



Trouser

Model – W710

PURE LINEN
802274



DYNAMIC

One of the foundations of the Scabal performance collections, Dynamic is refreshed for the first time since its original launch. This is a range of fabrics designed specifically for the needs of modern life, it has a gentle stretch which makes it comfortable for home working or long journeys, its crease-resistant properties make it ideal to be folded into a carryon suitcase without fear it will need to be pressed upon arrival. It is also shower resistant, perfect for the unpredictable weather patterns of global travelling.

Colour and designs are fresh and contemporary, crisp checks, tonal patterns and a wide selection of plains ranging from soft pastels through to classic greys, blues and black.

This lightweight, practical fabric is ideal for the requirements of a modern, hard-working suit.

PURE LINEN

Linen's cool and comfortable wearing properties have made it a favourite summer fabric for centuries. The Scabal pure linen collection uses only Irish linen which is regarded as the best in the world.

Chose from the 250gm "delave" linen which has been given a chic aged appearance through special washing and dyeing techniques or the more traditional and heavier 260gm, both are available in a wide choice of colours from soft pastels though to earthy tones of brown and green.



Outerwear

Model – Warwick 6

Casual Trouser

Model – Lewes R

PRISMA
754483



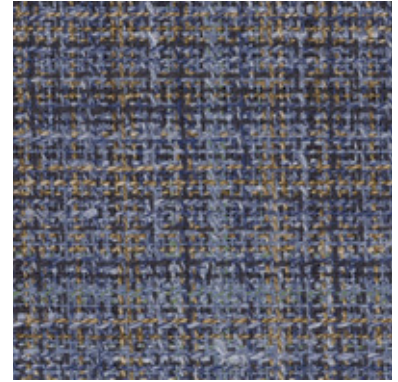
Outerwear

Model – Stanfield 1

ST TROPEZ
853308

Trouser

Dark Denim



WARWICK 6

This classic Scabal jacket continues to evolve this season with the introduction of the new Warwick 6. This edition still shares some of the traditional Warwick details, the double slider front zip, slanted side pockets and the inside phone pocket but it is designed to replace a suit jacket. The flat shirt collar, buttoned cuffs and jacket hems are all made in the same fabric as the jacket to give a very elegant and sartorial feel intended to elevate a casual look.

Available in both lined and unlined versions in a wide choice of Scabal suiting fabrics.

STANFIELD 1

A casual jacket with a twist. The addition of a detachable internal waistcoat adds interest and style. The front zip gives the impression of a gilet but can be quickly removed to revert to a regular jacket. This season a new style of gilet has been added with a soft ribbed collar which gives the jacket a sportswear feel especially when combined with the colourful fabrics from the Amalfi collection.

PRISMA

Inspired by the way light reflects on glass, the Prisma collection is a concise collection of lightweight summer suiting in a rainbow of colours. This Super 120's wool, Prunelle weave cloth is ideal for everyday suiting, it has a dry hand feel which makes it ideal for warmer climates.

Colours are bold but muted, due to the base colour being combined with a soft white, which tones down the brightness of the shade and gives it a contemporary look select from blues, greens, reds, browns greys or blacks.



Jacket

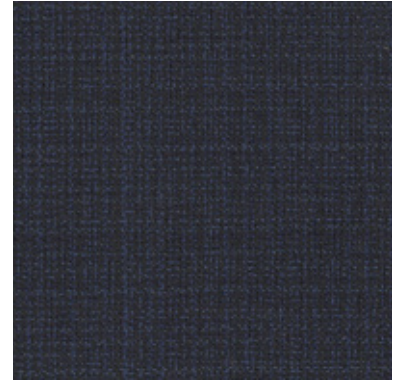
Model – Kenton

OuterwearModel – Plymouth 1
Overshirt**Outerwear**

Model – Warwick 6

Casual Trouser

Model – Lurgan

SILVER CLOUD
754314**PLYMOUTH 1**

The Plymouth is an unlined overshirt. Designed as a fashion piece to be worn as an over layer combined with jersey or knitwear. It has a button front closure with two large flap pockets and 2 concealed side pockets. Create a more casual look by selecting a soft fabric from the Cashmere cotton collection or for a more luxurious summer feel select something from Nobility with its wool and silk combination. For season long winter elegance, choose from Sonata's soft herringbones or from a large choice in the Flannel & Saxony collection.

WARWICK 6

This classic Scabal jacket continues to evolve this season with the introduction of the new Warwick 6. This edition still shares some of the traditional Warwick details, the double slider front zip, slanted side pockets and the inside phone pocket but it is designed to replace a suit jacket. The flat shirt collar, buttoned cuffs and jacket hems are all made in the same fabric as the jacket to give a very elegant and sartorial feel intended to elevate a casual look.

Available in both lined and unlined versions in a wide choice of Scabal suiting fabrics.



Leather

Model – Dromore
11-196

GOAT SUEDE
DEEP BLUE
138510

Trouser

Model – V700

CASHMERE
COTTON
501691



Leather

Model – Maldon

GOAT SUEDE
DEEP BLUE
138510

Trouser

Model – V700

CASHMERE
COTTON
501691

CASHMERE COTTON

This Scabal Cotton Cashmere collection is the perfect summer staple. Colourful, adaptable and with an added touch of luxury it's the ideal bunch for lightweight jacket, trousers or suits.

Leading the way is a selection of cotton & cashmere articles. exceptionally soft to the touch they offer a level of luxury not normally associated with cotton fabrics.

New this season we have a range of fabrics with added stretch making them even more comfortable to wear and bringing an element of crease resistance which makes them ideal as travel garments.

Closing the range are the 100% cotton items perfect for those with more traditional tastes.

Colours are varied and include summer brights, soft pastels and a large range of traditional tones in shades of beiges, blues and browns.



Jacket

Model – Kenton

CROSSOVER

754447



Jacket

Model – Soho

Trouser

Model – W715

COSMOPOLITAN

705965



Trouser

Model – V720

CROSSOVER

754448



CROSSOVER

Crossover is fast becoming one of the most popular collections in the Scabal portfolio. It has a simple but very effective concept – Fabrics are created in pairs, with one designed to stand out with patterns including checks, window panes and glenchecks with its partner a complimentary plain using the same woven base. It gives the wearer the opportunity to create multiple outfits from limited items.

The colour palette ranges from a soft red combination through beiges, greys browns and blues finishing with some classic navy designs perfect for a more classic suit or jacket.

This is the perfect collection to create an adaptable capsule home to office, office to bar and weekday to weekend this collection gives you the ability to create outfits ready for all occasions.

COSMOPOLITAN

Cosmopolitan is an ideal collection of summer suiting's designed to survive the urban jungle in the heat of summer without losing your sartorial edge.

Made from superfine Merino wool, this tropical weave fabric range is as varied as its name suggests. The colours and designs have been chosen to add to the feel of lightness in the fabric. Stripes are narrow and elegant, checks are subtle and tonal and overall the colours are considered and interesting ranging from the contemporary hues of beige, racing green, deep burgundy and rusty brown to a wide selection of more traditional suiting tones of greys, blues and blacks.

Summer in the city has never been so stylish.



SCABAL



SPRING / SUMMER 2023

Jacket

Model – Soho
Blue Line

Trouser

Model – V700
Blue Line

SUMMER
CASHMERE
754562



Jacket

Model – Soho

CROSSOVER
754449



Trouser

Model – W600

CROSSOVER
754450



SUMMER CASHMERE

Who says you can't enjoy the luxurious feel of cashmere in the summer months as well? certainly not the design team at Scabal. They have woven this favoured fibre into a super lightweight worsted cloth ideal for jackets and suits no matter how warm the climate. The superior weave also gives a natural crease resistance which makes this collection an ideal travel companion.

This is a carefully curated collection of 14 articles. Each one designed to create a statement piece that is robust enough to last through many summers. The colour choice reflects the season with off white, soft camel, red, and greens sitting alongside a selection of blues and greys.

Now you can enjoy the soft feel of luxury cashmere year-round.

CROSSOVER

Crossover is fast becoming one of the most popular collections in the Scabal portfolio. It has a simple but very effective concept – Fabrics are created in pairs, with one designed to stand out with patterns including checks, window panes and glenchecks with its partner a complimentary plain using the same woven base. It gives the wearer the opportunity to create multiple outfits from limited items.

The colour palette ranges from a soft red combination through beiges, greys browns and blues finishing with some classic navy designs perfect for a more classic suit or jacket.

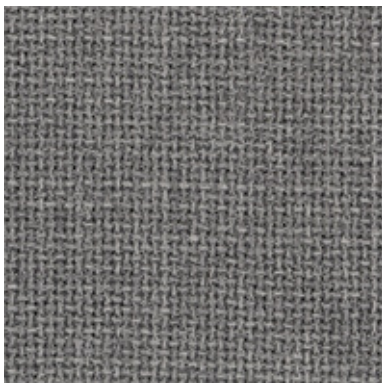
This is the perfect collection to create an adaptable capsule home to office, office to bar and weekday to weekend this collection gives you the ability to create outfits ready for all occasions.



Jacket

Model – Soho

RHAPSODY
802966



Jacket

Model – Curzon

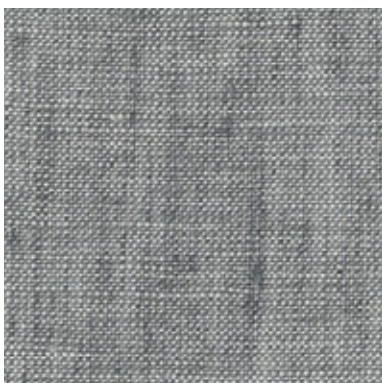
CROSSOVER
754441



Trouser

Model – V725

PURE LINEN
802261



Trouser

Model – V700

CROSSOVER
754442



RHAPSODY

Rhapsody returns this season resplendent with a selection of new colours. The collection opens with a selection of brightly coloured herringbones in a wool, linen and silk mix. They have an elegant sheen which is achieved by bringing the silk to the face of the weave and demand to be seen in colours ranging from yellow through turquoise to purples.

This leads into another array of herringbones, these have more muted colours and a more distinct pattern which adds a richness to the colours of the superfine merino wool.

The final chapter showcases a soft basket weave which brings a easy texture to the fabrics. Colours here are more subtle, cool greys, light blues and olive green all feature alongside classic navy and black ideal for more traditional tastes.

This really is a collection for the colour loving jacket connoisseur.

CROSSOVER

Crossover is fast becoming one of the most popular collections in the Scabal portfolio. It has a simple but very effective concept – Fabrics are created in pairs, with one designed to stand out with patterns including checks, window panes and glenchecks with its partner a complimentary plain using the same woven base. It gives the wearer the opportunity to create multiple outfits from limited items.

The colour palette ranges from a soft red combination through beiges, greys browns and blues finishing with some classic navy designs perfect for a more classic suit or jacket.

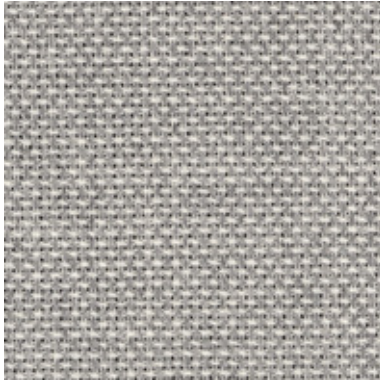
This is the perfect collection to create an adaptable capsule home to office, office to bar and weekday to weekend this collection gives you the ability to create outfits ready for all occasions.



Jacket

Model – Kenton

RHAPSODY
802965



Outerwear

Model – Exmoor

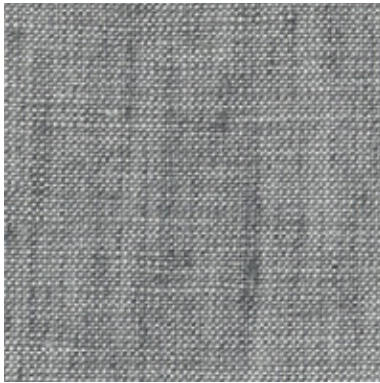
ST.TROPEZ
853306



Trouser

Model – V720

PURE LINEN
802261



Casual Trouser

Model – Perth

SILVER CLOUD
754326



EXMOOR

A Safari Jacket for the urban jungle. This is a statement summer garment, lightweight, unlined and easy to wear. It can be dressed up with a shirt and even a tie or dressed down with a light tee or sweater underneath. The belted waist, large patch pockets and button shoulder strap have a tropical military feel but when presented in a denim fabric from the new Amalfi collection it takes on a far more casual feel. Sleeves can be buttoned, open or rolled up to suit the occasion.

PURE LINEN

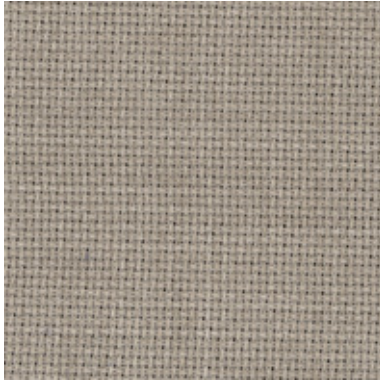
Linen's cool and comfortable wearing properties have made it a favourite summer fabric for centuries. The Scabal pure linen collection uses only Irish linen which is regarded as the best in the world.

Chose from the 250gm "delave" linen which has been given a chic aged appearance through special washing and dyeing techniques or the more traditional and heavier 260gm, both are available in a wide choice of colours from soft pastels though to earthy tones of brown and green.



Outerwear

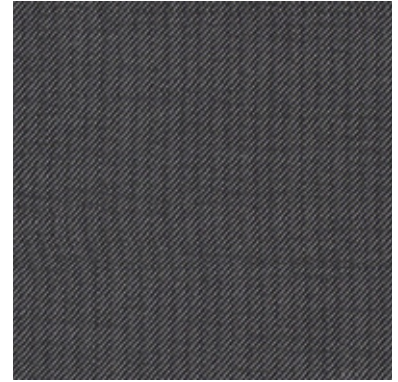
Model – Plymouth

ST TROPEZ
853319**Outerwear**

Model – Warwick 2

Casual Trouser

Model – Lurgan

NEW DELUXE
501563**Casual Trouser**

Model – Lurgan

NEW DELUXE
501563**PLYMOUTH 1**

The Plymouth is an unlined overshirt. Designed as a fashion piece to be worn as an over layer combined with jersey or knitwear. It has a button front closure with two large flap pockets and 2 concealed side pockets. Create a more casual look by selecting a soft fabric from the Cashmere cotton collection or for a more luxurious summer feel select something from Nobility with its wool and silk combination. For season long winter elegance, choose from Sonata's soft herringbones or from a large choice in the Flannel & Saxony collection.

WARWICK 2

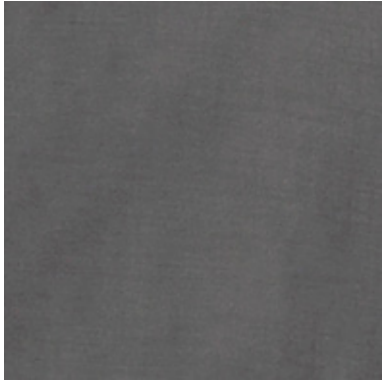
This bomber jacket is designed for changeable weather conditions. Choose from a technical performance fabric or from a wide selection of the Scabal cloth collections to create a more sartorial jacket. A soft rib on the base and cuffs adds some comfort and we have enhanced this model adding a cupro lining and the addition of a deco stitch detail and a contrast stripe on the rib.



Outerwear

Model – Ludlow 1

EXCLUSIVE
FABRICS
602210



Casual Trouser

Model – Lurgan

DYNAMIC
706039



LUDLOW 1

The Ludlow has been designed as a combination of sportswear utility and Savile Row elegance. Functionality has been considered in every detail. The front and pocket zips are constructed with rubber zip tape, the chest pocket has an invisible zip, the standing collar has hidden press studs to give it an elegant finish, there is a hidden hood within the collar, hidden lycra cuffs to keep out the cold and an adjustable drawstring waistband for added comfort and to keep the jacket in place when moving.

Available in a selection of technical fabrics designed to enhance its sporty appearance and add an additional layer of technical protection with their weather resistance properties.

DYNAMIC

One of the foundations of the Scabal performance collections, Dynamic is refreshed for the first time since its original launch. This is a range of fabrics designed specifically for the needs of modern life, it has a gentle stretch which makes it comfortable for home working or long journeys, its crease-resistant properties make it ideal to be folded into a carryon suitcase without fear it will need to be pressed upon arrival. It is also shower resistant, perfect for the unpredictable weather patterns of global travelling.

Colour and designs are fresh and contemporary, crisp checks, tonal patterns and a wide selection of plains ranging from soft pastels through to classic greys, blues and black.

This lightweight, practical fabric is ideal for the requirements of a modern, hard-working suit.



Leather

Model – Maldon
11-177

GOAT SUEDE
LIGHT HONEY
138053

Casual Trouser

Model – Lewes

CASHMERE
COTTON
501682



CASHMERE COTTON

This Scabal Cotton Cashmere collection is the perfect summer staple. Colourful, adaptable and with an added touch of luxury it's the ideal bunch for lightweight jacket, trousers or suits.

Leading the way is a selection of cotton & cashmere articles. exceptionally soft to the touch they offer a level of luxury not normally associated with cotton fabrics.

New this season we have a range of fabrics with added stretch making them even more comfortable to wear and bringing an element of crease resistance which makes them ideal as travel garments.

Closing the range are the 100% cotton items perfect for those with more traditional tastes.

Colours are varied and include summer brights, soft pastels and a large range of traditional tones in shades of beiges, blues and browns.



Leather

Model – Hexham
11-175

GOAT SUEDE
LIGHT HONEY
138053



Casual Trouser

Model – Perth

DYNAMIC
706035

Leather

Model – Irvine
11-176

GOAT SUEDE
LIGHT GREY
138137



Casual Trouser

Model – Perth

CASHMERE
COTTON
501682

DYNAMIC

One of the foundations of the Scabal performance collections, Dynamic is refreshed for the first time since its original launch. This is a range of fabrics designed specifically for the needs of modern life, it has a gentle stretch which makes it comfortable for home working or long journeys, its crease-resistant properties make it ideal to be folded into a carryon suitcase without fear it will need to be pressed upon arrival. It is also shower resistant, perfect for the unpredictable weather patterns of global travelling.

Colour and designs are fresh and contemporary, crisp checks, tonal patterns and a wide selection of plains ranging from soft pastels through to classic greys, blues and black.

This lightweight, practical fabric is ideal for the requirements of a modern, hard-working suit.

CASHMERE COTTON

This Scabal Cotton Cashmere collection is the perfect summer staple. Colourful, adaptable and with an added touch of luxury it's the ideal bunch for lightweight jacket, trousers or suits.

Leading the way is a selection of cotton & cashmere articles. exceptionally soft to the touch they offer a level of luxury not normally associated with cotton fabrics.

New this season we have a range of fabrics with added stretch making them even more comfortable to wear and bringing an element of crease resistance which makes them ideal as travel garments.

Closing the range are the 100% cotton items perfect for those with more traditional tastes.

Colours are varied and include summer brights, soft pastels and a large range of traditional tones in shades of beiges, blues and browns.



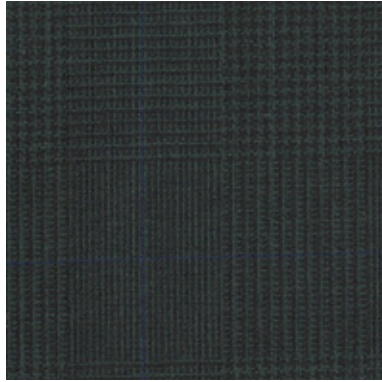
Jacket

Model – Soho

Trouser

Model – G625

COSMOPOLITAN
705975



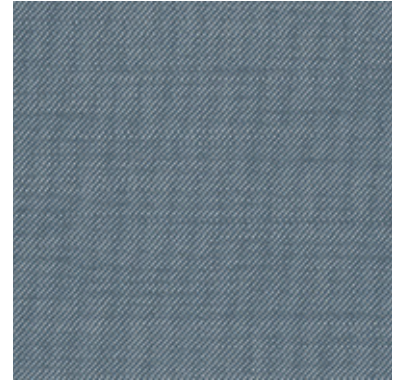
Jacket

Model – Kenton

Trouser

Model – V710

PRISMA
754473



73 - GREEN LEAVES

COSMOPOLITAN

Cosmopolitan is an ideal collection of summer suiting's designed to survive the urban jungle in the heat of summer without losing your sartorial edge.

Made from superfine Merino wool, this tropical weave fabric range is as varied as its name suggests. The colours and designs have been chosen to add to the feel of lightness in the fabric. Stripes are narrow and elegant, checks are subtle and tonal and overall the colours are considered and interesting ranging from the contemporary hues of beige, racing green, deep burgundy and rusty brown to a wide selection of more traditional suiting tones of greys, blues and blacks.

Summer in the city has never been so stylish.

PRISMA

Inspired by the way light reflects on glass, the Prisma collection is a concise collection of lightweight summer suiting in a rainbow of colours. This Super 120's wool, Prunelle weave cloth is ideal for everyday suiting, it has a dry hand feel which makes it ideal for warmer climates.

Colours are bold but muted, due to the base colour being combined with a soft white, which tones down the brightness of the shade and gives it a contemporary look select from blues, greens, reds, browns greys or blacks.



Jacket

Model – Soho

Trouser

Model – G725

COSMOPOLITAN
705991



COSMOPOLITAN

Cosmopolitan is an ideal collection of summer suiting's designed to survive the urban jungle in the heat of summer without losing your sartorial edge.

Made from superfine Merino wool, this tropical weave fabric range is as varied as its name suggests. The colours and designs have been chosen to add to the feel of lightness in the fabric. Stripes are narrow and elegant, checks are subtle and tonal and overall the colours are considered and interesting ranging from the contemporary hues of beige, racing green, deep burgundy and rusty brown to a wide selection of more traditional suiting tones of greys, blues and blacks.

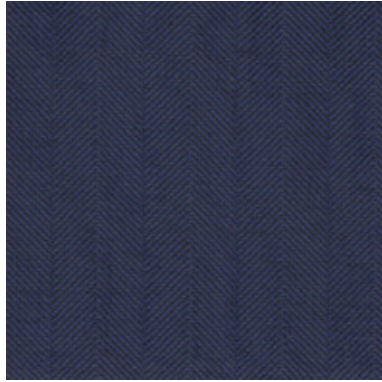
Summer in the city has never been so stylish.



Jacket

Model – Kenton

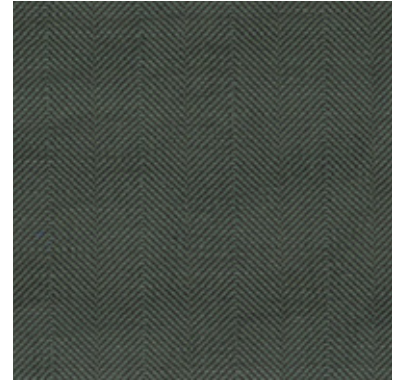
RHAPSODY
802949



Jacket

Model – Kenton

RHAPSODY
802945



Trouser

Model – V700

PURE LINEN
802252



Trouser

Model – G725

COSMOPOLITAN
705991



RHAPSODY

Rhapsody returns this season resplendent with a selection of new colours. The collection opens with a selection of brightly coloured herringbones in a wool, linen and silk mix. They have an elegant sheen which is achieved by bringing the silk to the face of the weave and demand to be seen in colours ranging from yellow through turquoise to purples.

This leads into another array of herringbones, these have more muted colours and a more distinct pattern which adds a richness to the colours of the superfine merino wool.

The final chapter showcases a soft basket weave which brings a easy texture to the fabrics. Colours here are more subtle, cool greys, light blues and olive green all feature alongside classic navy and black ideal for more traditional tastes.

This really is a collection for the colour loving jacket connoisseur.

COSMOPOLITAN

Cosmopolitan is an ideal collection of summer suiting's designed to survive the urban jungle in the heat of summer without losing your sartorial edge.

Made from superfine Merino wool, this tropical weave fabric range is as varied as its name suggests. The colours and designs have been chosen to add to the feel of lightness in the fabric. Stripes are narrow and elegant, checks are subtle and tonal and overall the colours are considered and interesting ranging from the contemporary hues of beige, racing green, deep burgundy and rusty brown to a wide selection of more traditional suiting tones of greys, blues and blacks.

Summer in the city has never been so stylish.



Jacket

Model – Soho

ST TROPEZ
853311



Jacket

Model – Kenton

ST TROPEZ
853303



Trouser

Model – V700

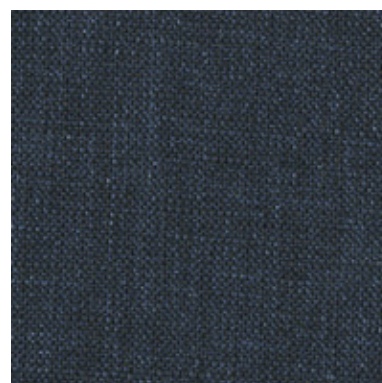
PURE LINEN
802252



Casual Trouser

Model – Lewes

PURE LINEN
802252



ST. TROPEZ

Designed with the laid-back glamour and relaxed summer feel of this iconic destination in mind, the St Tropez collection returns this season.

The collection falls into three chapters. Opening with a selection of fancy checks, moving into a range of soft pique and closing with some modern seersuckers.

Across the selection of checks you will see oranges, purples, greens, reds and shades of blues combined in unexpected combinations to create statement jackets designed to stand out on a summer evening.

A modern summer jacket needs to be more than just beautiful and this collection answers that brief by introducing a selection of fabrics with a pique knitted character and a soft stretch to give greater comfort and a more relaxed look.

Closing the range is a choice of subtle seersuckers with a modern feel and a soft stretch. Ideal to create a more classic blazer or even a contemporary Tuxedo.

PURE LINEN

Linen's cool and comfortable wearing properties have made it a favourite summer fabric for centuries. The Scabal pure linen collection uses only Irish linen which is regarded as the best in the world.

Chose from the 250gm "delave" linen which has been given a chic aged appearance through special washing and dyeing techniques or the more traditional and heavier 260gm, both are available in a wide choice of colours from soft pastels though to earthy tones of brown and green.



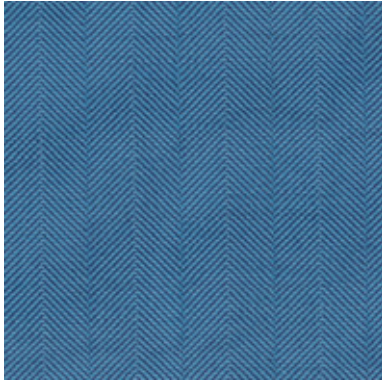
Jacket

Model – Soho

RHAPSODY
802944

Trouser

Dark Denim



RHAPSODY

Rhapsody returns this season resplendent with a selection of new colours. The collection opens with a selection of brightly coloured herringbones in a wool, linen and silk mix. They have an elegant sheen which is achieved by bringing the silk to the face of the weave and demand to be seen in colours ranging from yellow through turquoise to purples.

This leads into another array of herringbones, these have more muted colours and a more distinct pattern which adds a richness to the colours of the superfine merino wool.

The final chapter showcases a soft basket weave which brings a easy texture to the fabrics. Colours here are more subtle, cool greys, light blues and olive green all feature alongside classic navy and black ideal for more traditional tastes.

This really is a collection for the colour loving jacket connoisseur.

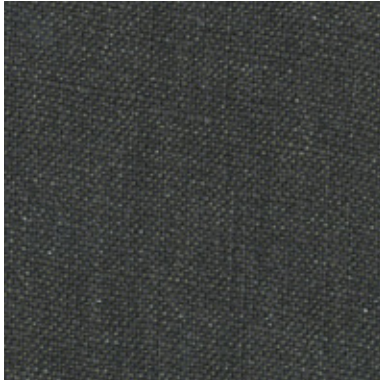


Outerwear

Model – Exmoor

AMALFI
853104**Casual Trouser**

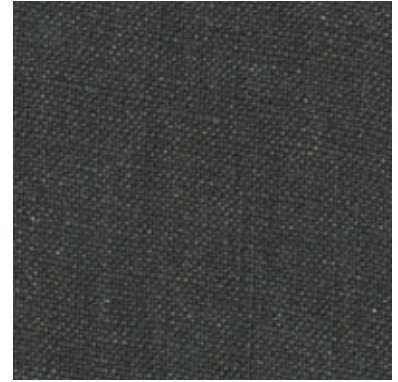
Model – Perth

PURE LINEN
802258**Outerwear**

Model – Plymouth

PURE LINEN
802258**Casual Trouser**

Model – Perth

**EXMOOR**

A Safari Jacket for the urban jungle. This is a statement summer garment, lightweight, unlined and easy to wear. It can be dressed up with a shirt and even a tie or dressed down with a light tee or sweater underneath. The belted waist, large patch pockets and button shoulder strap have a tropical military feel but when presented in a denim fabric from the new Amalfi collection it takes on a far more casual feel. Sleeves can be buttoned, open or rolled up to suit the occasion.

PLYMOUTH I

The Plymouth is an unlined overshirt. Designed as a fashion piece to be worn as an over layer combined with jersey or knitwear. It has a button front closure with two large flap pockets and 2 concealed side pockets. Create a more casual look by selecting a soft fabric from the Cashmere cotton collection or for a more luxurious summer feel select something from Nobility with its wool and silk combination. For season long winter elegance, choose from Sonata's soft herringbones or from a large choice in the Flannel & Saxony collection.



Leather

Model – Hexham
11-175

GOAT SUEDE
OLIVE GREEN
138686



Trouser

Model – G720

PURE LINEN
802267

PURE LINEN

Linen's cool and comfortable wearing properties have made it a favourite summer fabric for centuries. The Scabal pure linen collection uses only Irish linen which is regarded as the best in the world.

Chose from the 250gm "delave" linen which has been given a chic aged appearance through special washing and dyeing techniques or the more traditional and heavier 260gm, both are available in a wide choice of colours from soft pastels though to earthy tones of brown and green.



SCABAL



SPRING / SUMMER 2023

Jacket

Model – Kenton

Trouser

Model – V710

COSMOPOLITAN
705992



Jacket

Model – Curzon

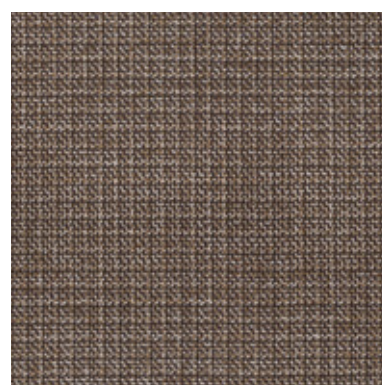
CROSSOVER
754451



Trouser

Model – V725

CROSSOVER
754452



COSMOPOLITAN

Cosmopolitan is an ideal collection of summer suiting's designed to survive the urban jungle in the heat of summer without losing your sartorial edge.

Made from superfine Merino wool, this tropical weave fabric range is as varied as its name suggests. The colours and designs have been chosen to add to the feel of lightness in the fabric. Stripes are narrow and elegant, checks are subtle and tonal and overall the colours are considered and interesting ranging from the contemporary hues of beige, racing green, deep burgundy and rusty brown to a wide selection of more traditional suiting tones of greys, blues and blacks.

Summer in the city has never been so stylish.

CROSSOVER

Crossover is fast becoming one of the most popular collections in the Scabal portfolio. It has a simple but very effective concept – Fabrics are created in pairs, with one designed to stand out with patterns including checks, window panes and glenchecks with its partner a complimentary plain using the same woven base. It gives the wearer the opportunity to create multiple outfits from limited items.

The colour palette ranges from a soft red combination through beiges, greys browns and blues finishing with some classic navy designs perfect for a more classic suit or jacket.

This is the perfect collection to create an adaptable capsule home to office, office to bar and weekday to weekend this collection gives you the ability to create outfits ready for all occasions.



SCABAL

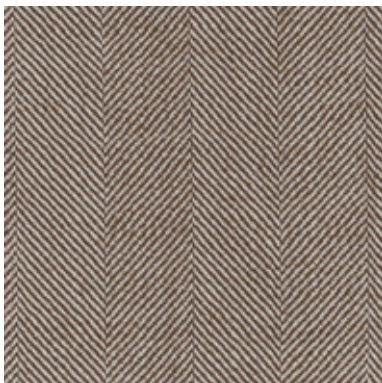


SPRING / SUMMER 2023

Jacket

Model – Soho

RHAPSODY
802950



Jacket

Model – Soho

RHAPSODY
802951



Trouser

Model – V700

ETON
754082



Trouser

Model – W700

GALAXY
705676



RHAPSODY

Rhapsody returns this season resplendent with a selection of new colours. The collection opens with a selection of brightly coloured herringbones in a wool, linen and silk mix. They have an elegant sheen which is achieved by bringing the silk to the face of the weave and demand to be seen in colours ranging from yellow through turquoise to purples.

This leads into another array of herringbones, these have more muted colours and a more distinct pattern which adds a richness to the colours of the superfine merino wool.

The final chapter showcases a soft basket weave which brings a easy texture to the fabrics. Colours here are more subtle, cool greys, light blues and olive green all feature alongside classic navy and black ideal for more traditional tastes.

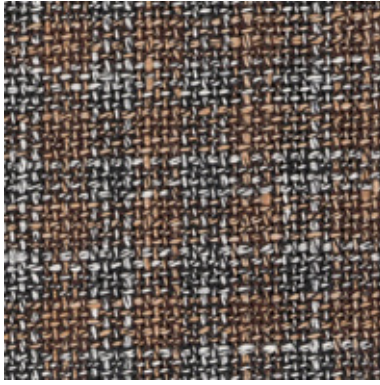
This really is a collection for the colour loving jacket connoisseur.



Jacket

Model – Soho

ST TROPEZ
853313



Casual Trouser

Model – Perth

PURE LINEN
802266



ST. TROPEZ

Designed with the laid-back glamour and relaxed summer feel of this iconic destination in mind, the St Tropez collection returns this season.

The collection falls into three chapters. Opening with a selection of fancy checks, moving into a range of soft pique and closing with some modern seersuckers.

Across the selection of checks you will see oranges, purples, greens, reds and shades of blues combined in unexpected combinations to create statement jackets designed to stand out on a summer evening.

A modern summer jacket needs to be more than just beautiful and this collection answers that brief by introducing a selection of fabrics with a pique knitted character and a soft stretch to give greater comfort and a more relaxed look.

Closing the range is a choice of subtle seersuckers with a modern feel and a soft stretch. Ideal to create a more classic blazer or even a contemporary Tuxedo.

PURE LINEN

Linen's cool and comfortable wearing properties have made it a favourite summer fabric for centuries. The Scabal pure linen collection uses only Irish linen which is regarded as the best in the world.

Chose from the 250gm "delave" linen which has been given a chic aged appearance through special washing and dyeing techniques or the more traditional and heavier 260gm, both are available in a wide choice of colours from soft pastels though to earthy tones of brown and green.



Jacket

Model – Kenton

RHAPSODY
802941

Trouser

PURE LINEN
802265



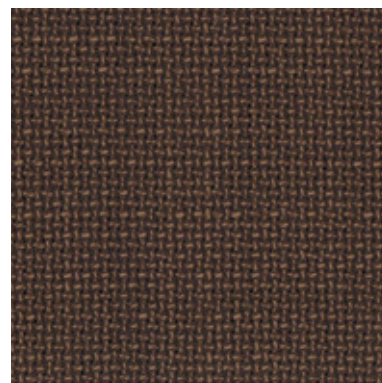
Jacket

Model – Soho

RHAPSODY
802970

Trouser

CASHMERE
COTTON
501691



71 - WILD TIGER

RHAPSODY

Rhapsody returns this season resplendent with a selection of new colours. The collection opens with a selection of brightly coloured herringbones in a wool, linen and silk mix. They have an elegant sheen which is achieved by bringing the silk to the face of the weave and demand to be seen in colours ranging from yellow through turquoise to purples.

This leads into another array of herringbones, these have more muted colours and a more distinct pattern which adds a richness to the colours of the superfine merino wool.

The final chapter showcases a soft basket weave which brings a easy texture to the fabrics. Colours here are more subtle, cool greys, light blues and olive green all feature alongside classic navy and black ideal for more traditional tastes.

This really is a collection for the colour loving jacket connoisseur.

CASHMERE COTTON

This Scabal Cotton Cashmere collection is the perfect summer staple. Colourful, adaptable and with an added touch of luxury it's the ideal bunch for lightweight jacket, trousers or suits.

Leading the way is a selection of cotton & cashmere articles. exceptionally soft to the touch they offer a level of luxury not normally associated with cotton fabrics.

New this season we have a range of fabrics with added stretch making them even more comfortable to wear and bringing an element of crease resistance which makes them ideal as travel garments.

Closing the range are the 100% cotton items perfect for those with more traditional tastes.

Colours are varied and include summer brights, soft pastels and a large range of traditional tones in shades of beiges, blues and browns.



Jacket

Model – Kenton

ST TROPEZ
853301



Trouser

Model – W710

PURE LINEN
802265



ST. TROPEZ

Designed with the laid-back glamour and relaxed summer feel of this iconic destination in mind, the St Tropez collection returns this season.

The collection falls into three chapters. Opening with a selection of fancy checks, moving into a range of soft pique and closing with some modern seersuckers.

Across the selection of checks you will see oranges, purples, greens, reds and shades of blues combined in unexpected combinations to create statement jackets designed to stand out on a summer evening.

A modern summer jackets needs to be more than just beautiful and this collection answers that brief by introducing a selection of fabrics with a pique knitted character and a soft stretch to give greater comfort and a more relaxed look.

Closing the range is a choice of subtle seersuckers with a modern feel and a soft stretch. Ideal to create a more classic blazer or even a contemporary Tuxedo.

PURE LINEN

Linen's cool and comfortable wearing properties have made it a favourite summer fabric for centuries. The Scabal pure linen collection uses only Irish linen which is regarded as the best in the world.

Chose from the 250gm "delave" linen which has been given a chic aged appearance through special washing and dyeing techniques or the more traditional and heavier 260gm, both are available in a wide choice of colours from soft pastels though to earthy tones of brown and green.



Outerwear

Model – Exmoor

PURE LINEN
802265



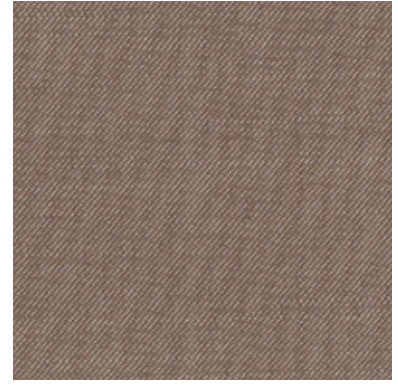
Outerwear

Model – Plymouth

Casual Trouser

Model – Helston

PRISMA
754474



Trouser

Model – W700

CASHMERE
COTTON
501691



EXMOOR

A Safari Jacket for the urban jungle. This is a statement summer garment, lightweight, unlined and easy to wear. It can be dressed up with a shirt and even a tie or dressed down with a light tee or sweater underneath. The belted waist, large patch pockets and button shoulder strap have a tropical military feel but when presented in a denim fabric from the new Amalfi collection it takes on a far more casual feel. Sleeves can be buttoned, open or rolled up to suit the occasion.

PLYMOUTH I

The Plymouth is an unlined overshirt. Designed as a fashion piece to be worn as an over layer combined with jersey or knitwear. It has a button front closure with two large flap pockets and 2 concealed side pockets. Create a more casual look by selecting a soft fabric from the Cashmere cotton collection or for a more luxurious summer feel select something from Nobility with its wool and silk combination. For season long winter elegance, choose from Sonata's soft herringbones or from a large choice in the Flannel & Saxony collection.



Outerwear

Model – Dartmoor 2

CLASSICS
704198



Casual Trouser

Model – Lewes

PURE LINEN
802265



DARTMOOR 2

The Dartmoor jacket has a utility feel to it but with unmistakable Scabal touches that make it a wardrobe essential. Functionality is key, with 4 large front pockets, a detachable, hidden hood and a collar strap with snap button. It has a light construction and is half lined in a soft Silver Ghost fabric. For added comfort it has an inner drawstring waist and a shoulder pleat with an internal elastic band which provides flexible movement and ensures the jacket always keeps its shape. Now available in a selection of Scabal fabrics designed to give it a more sartorial look than the original Dartmoor.



Leather

Model – Irvine
11-176

GOAT SUEDE
LIGHT BROWN
138804



Trouser

Model – W700

PURE LINEN
802265

PURE LINEN

Linen's cool and comfortable wearing properties have made it a favourite summer fabric for centuries. The Scabal pure linen collection uses only Irish linen which is regarded as the best in the world.

Chose from the 250gm "delave" linen which has been given a chic aged appearance through special washing and dyeing techniques or the more traditional and heavier 260gm, both are available in a wide choice of colours from soft pastels though to earthy tones of brown and green.



Outerwear

Model – Lomond 1

EXCLUSIVE
FABRIC
602211

SIDE A



CAPRI
501540

SIDE B



LOMOND 1

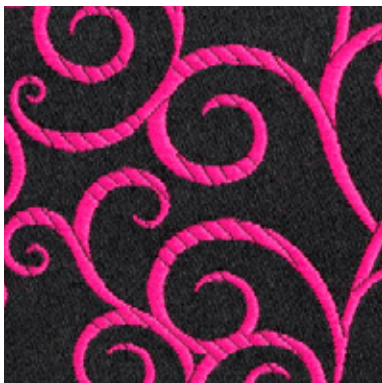
These days a city wardrobe needs to be adaptable and this reversible overcoat gives gentleman the opportunity to have a functional, stylish and lightweight mac that not only gives weather protection but with the introduction of contrast colour options can have two completely different looks in one garment making it even more essential for a working wardrobe.



Jacket

Model – Kenton

FESTIVAL
853213



Trouser

Model – V700

FESTIVAL
853263



FESTIVAL

Salvador Dali once said “A dull outfit has never highlighted a personality” and following his ethos the new Festival collection has been designed to let your personality shine through.

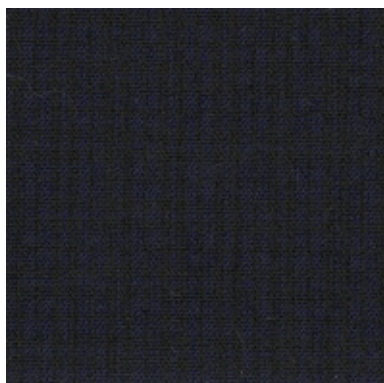
There are many layers to the collection: vibrant fluorescents, a large selection of printed velvets, opulent jacquards, sparkling lurex and Doppione silks. Colours range from glamorous silvers and golds through midnight blues, deep burgundy's and the collection closes with a selection of classic evening wear choices in the subtler shades of charcoal greys, navy's and blacks.



Jacket

Model – Kenton

ST TROPEZ
853326



Jacket

Model – Kenton

Trouser

Model – V700

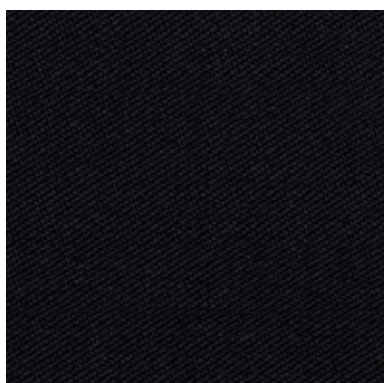
DYNAMIC
706033



Trouser

Model – V700

FESTIVAL
853262



ST. TROPEZ

Designed with the laid-back glamour and relaxed summer feel of this iconic destination in mind, the St Tropez collection returns this season.

The collection falls into three chapters. Opening with a selection of fancy checks, moving into a range of soft pique and closing with some modern seersuckers.

Across the selection of checks you will see oranges, purples, greens, reds and shades of blues combined in unexpected combinations to create statement jackets designed to stand out on a summer evening.

A modern summer jacket needs to be more than just beautiful and this collection answers that brief by introducing a selection of fabrics with a pique knitted character and a soft stretch to give greater comfort and a more relaxed look.

Closing the range is a choice of subtle seersuckers with a modern feel and a soft stretch. Ideal to create a more classic blazer or even a contemporary Tuxedo.

DYNAMIC

One of the foundations of the Scabal performance collections, Dynamic is refreshed for the first time since its original launch. This is a range of fabrics designed specifically for the needs of modern life, it has a gentle stretch which makes it comfortable for home working or long journeys, its crease-resistant properties make it ideal to be folded into a carryon suitcase without fear it will need to be pressed upon arrival. It is also shower resistant, perfect for the unpredictable weather patterns of global travelling.

Colour and designs are fresh and contemporary, crisp checks, tonal patterns and a wide selection of plains ranging from soft pastels through to classic greys, blues and black.

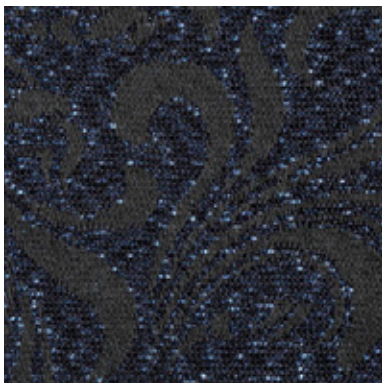
This lightweight, practical fabric is ideal for the requirements of a modern, hard-working suit.



Jacket

Model – Soho

FESTIVAL
853232



Jacket

Model – Soho

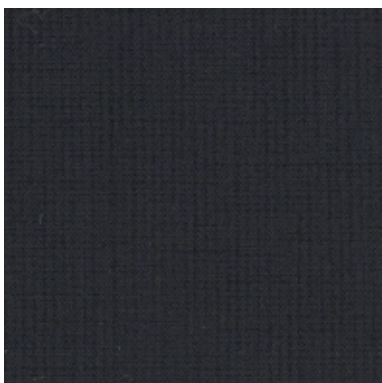
FESTIVAL
853254



Trouser

Model – W700

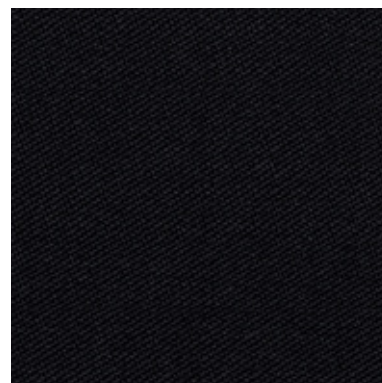
DYNAMIC
706045



Trouser

Model – V700

FESTIVAL
853262



DYNAMIC

One of the foundations of the Scabal performance collections, Dynamic is refreshed for the first time since its original launch. This is a range of fabrics designed specifically for the needs of modern life, it has a gentle stretch which makes it comfortable for home working or long journeys, its crease-resistant properties make it ideal to be folded into a carryon suitcase without fear it will need to be pressed upon arrival. It is also shower resistant, perfect for the unpredictable weather patterns of global travelling.

Colour and designs are fresh and contemporary, crisp checks, tonal patterns and a wide selection of plains ranging from soft pastels through to classic greys, blues and black.

This lightweight, practical fabric is ideal for the requirements of a modern, hard-working suit.

FESTIVAL

Salvador Dali once said “A dull outfit has never highlighted a personality” and following his ethos the new Festival collection has been designed to let your personality shine through.

There are many layers to the collection: vibrant fluorescents, a large selection of printed velvets, opulent jacquards, sparkling lurex and Doppione silks. Colours range from glamorous silvers and golds through midnight blues, deep burgundy's and the collection closes with a selection of classic evening wear choices in the subtler shades of charcoal greys, navy's and blacks.